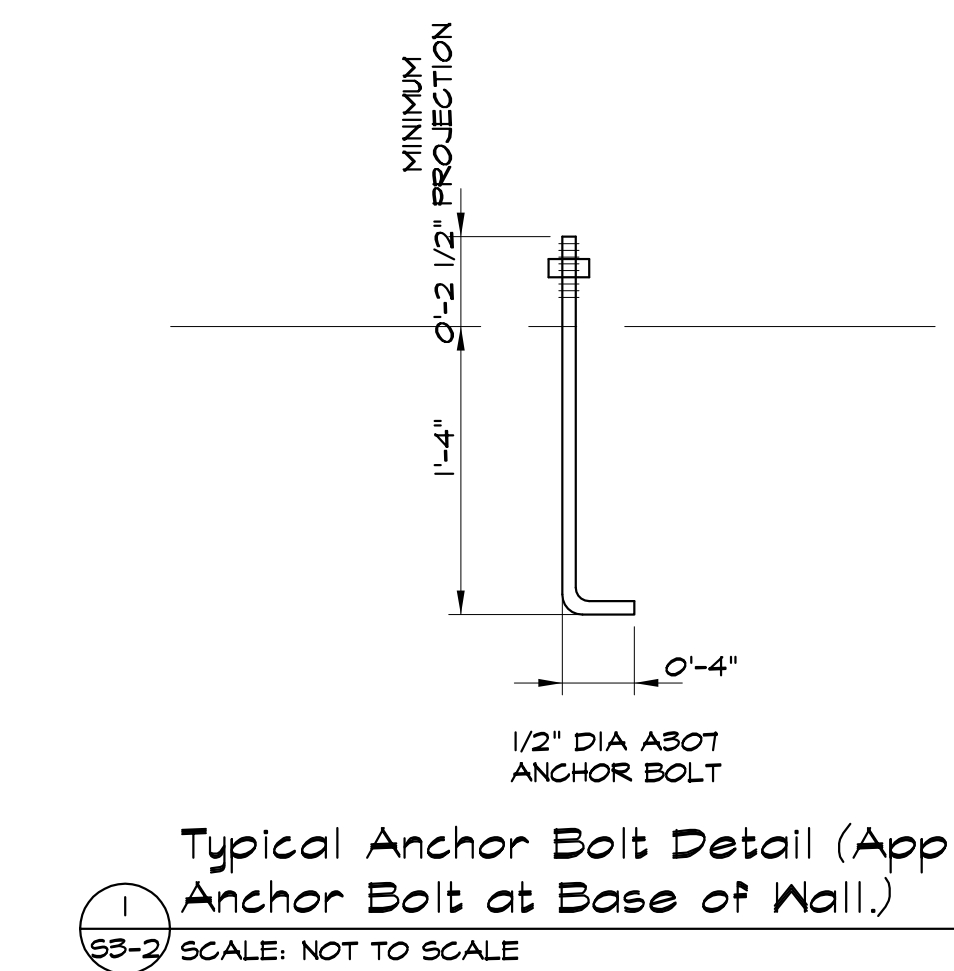
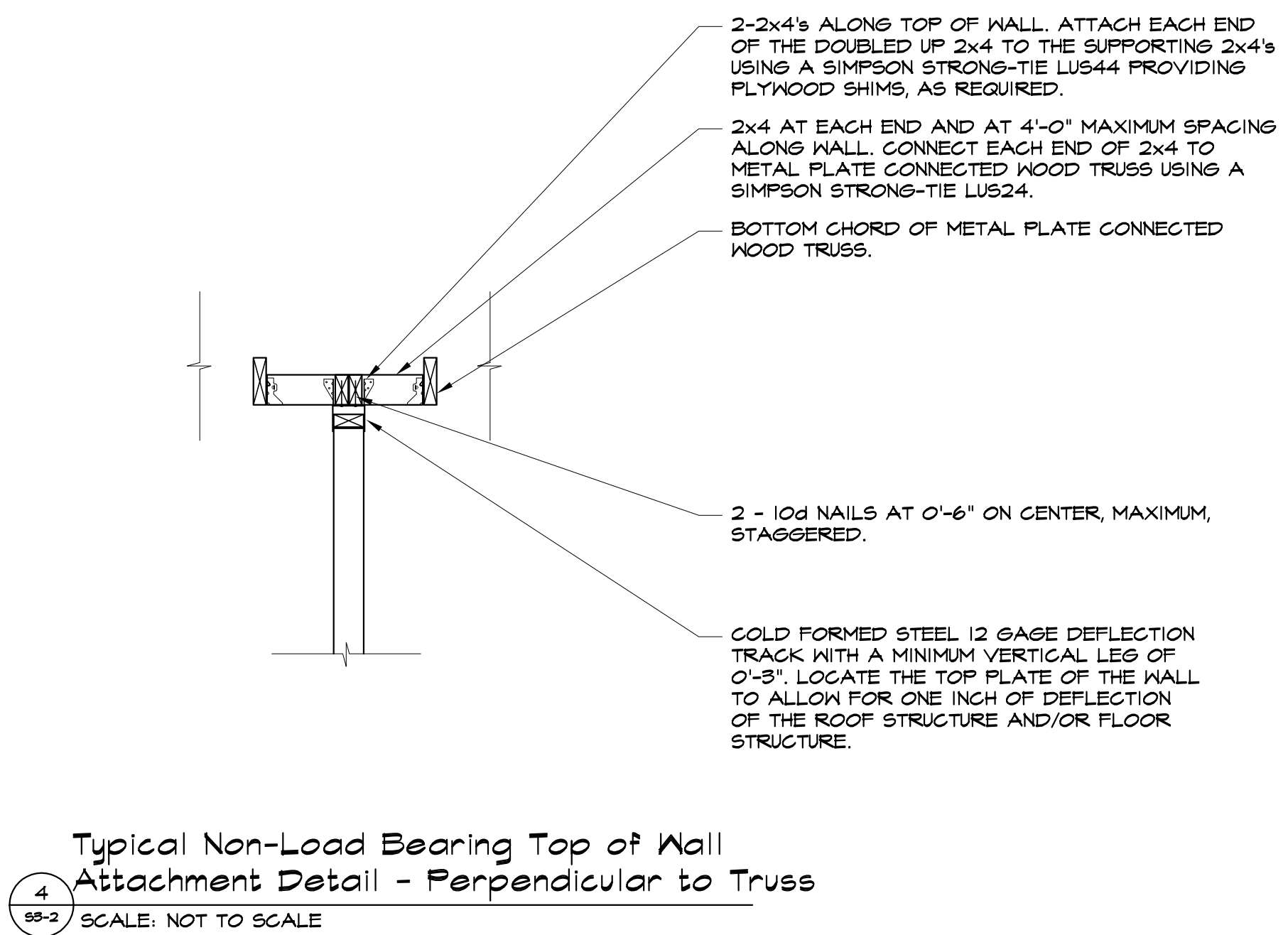
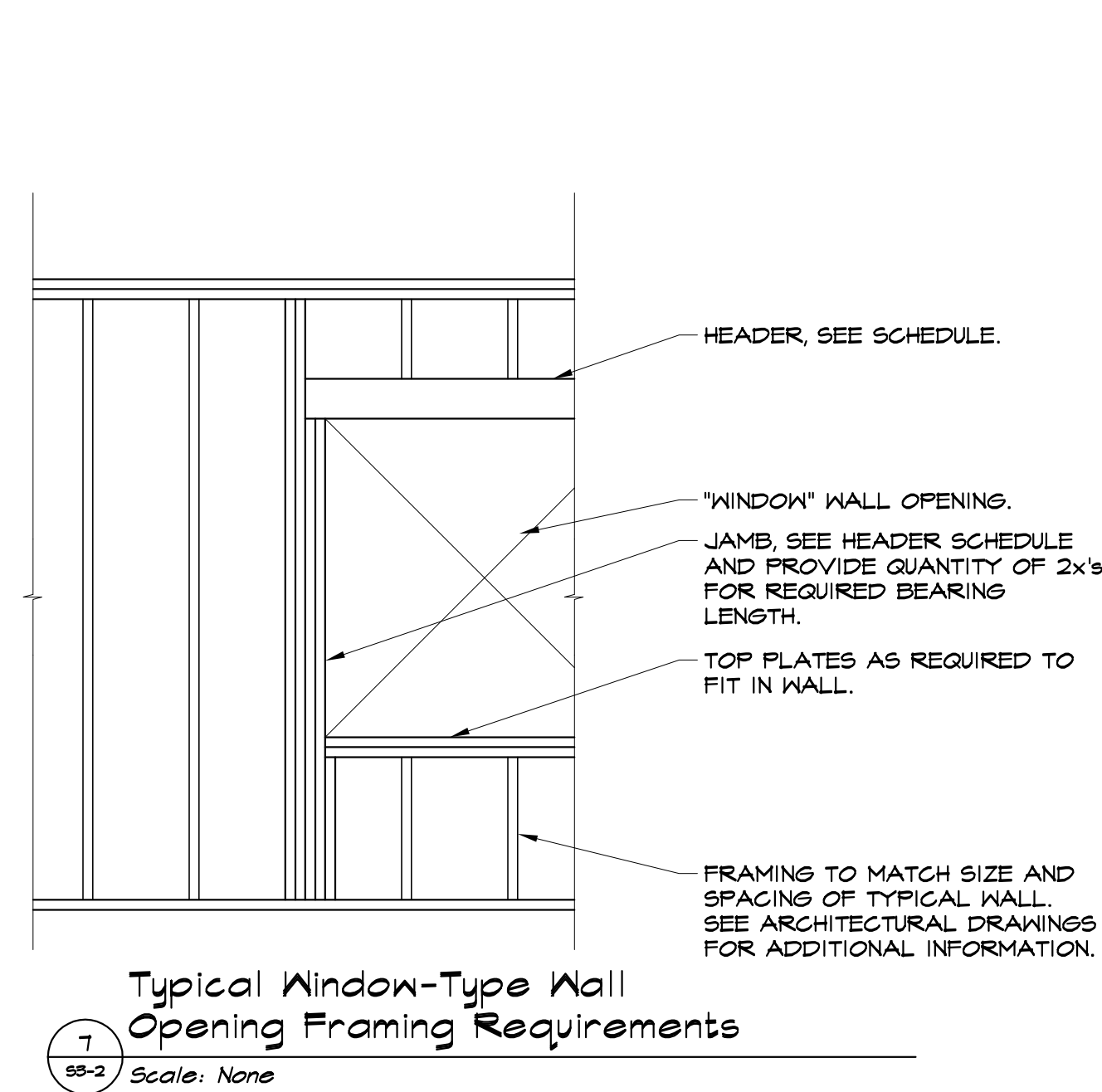
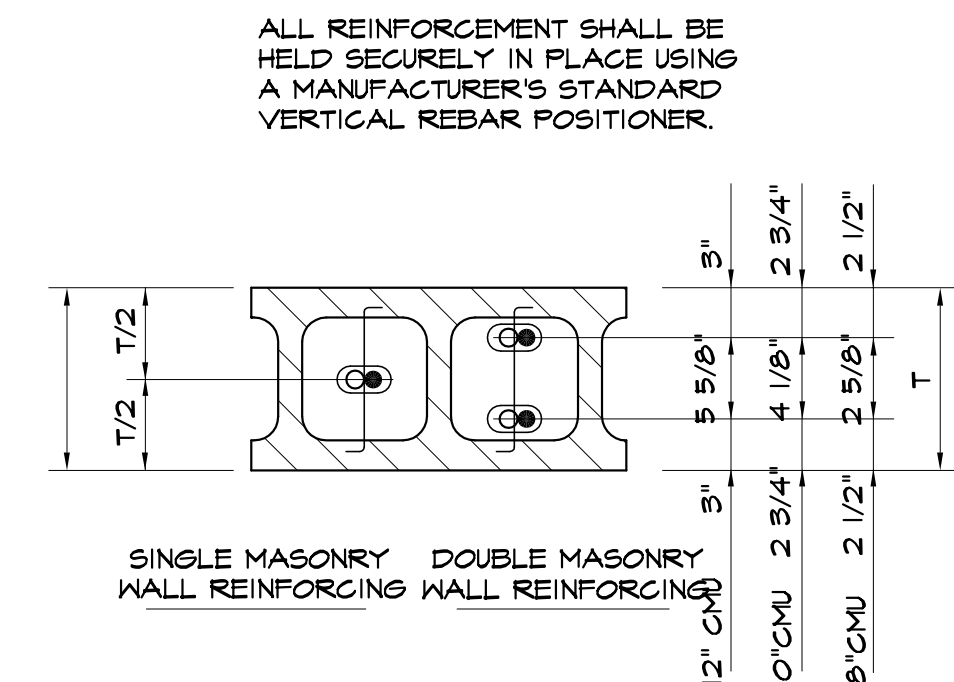
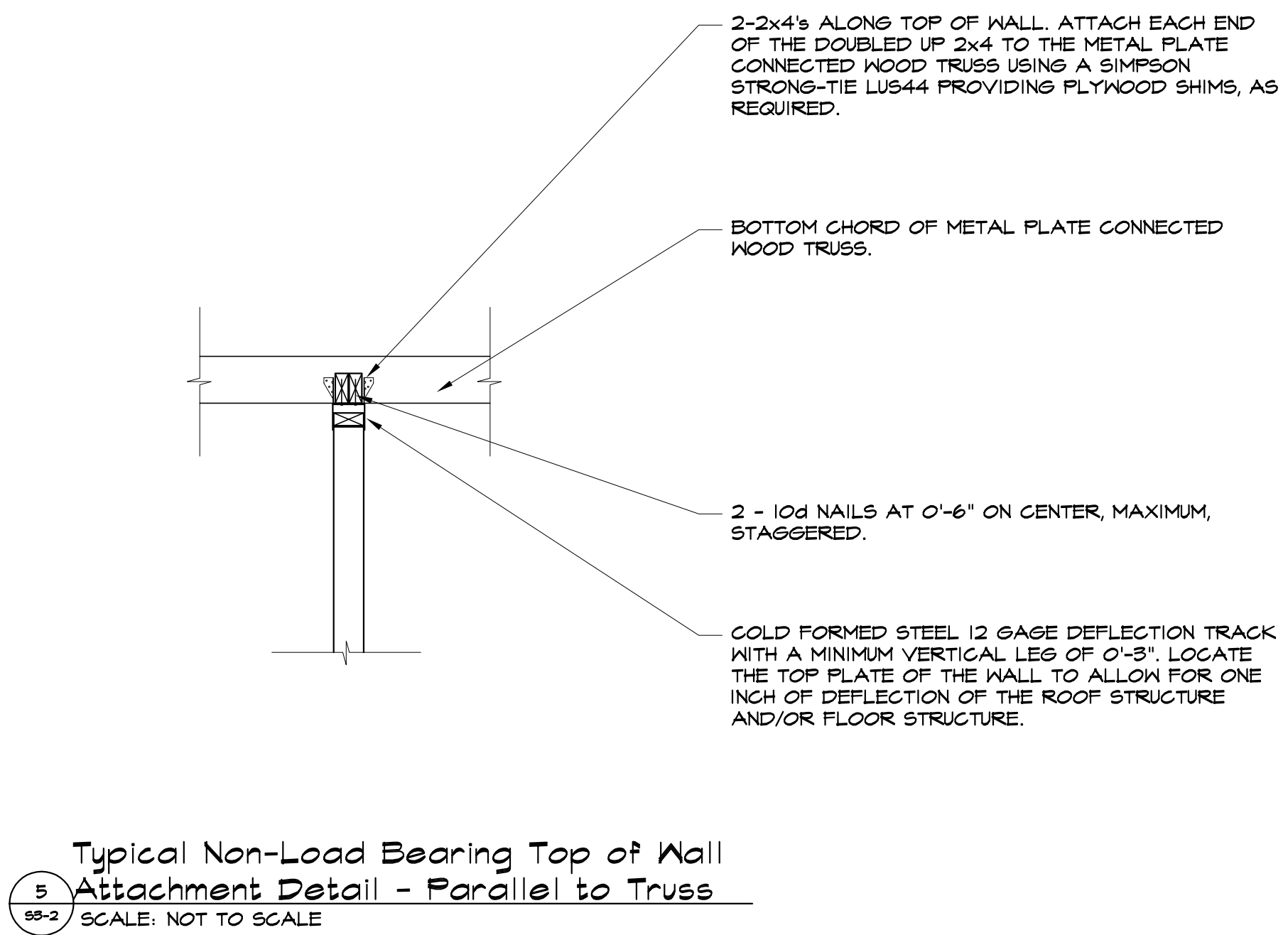
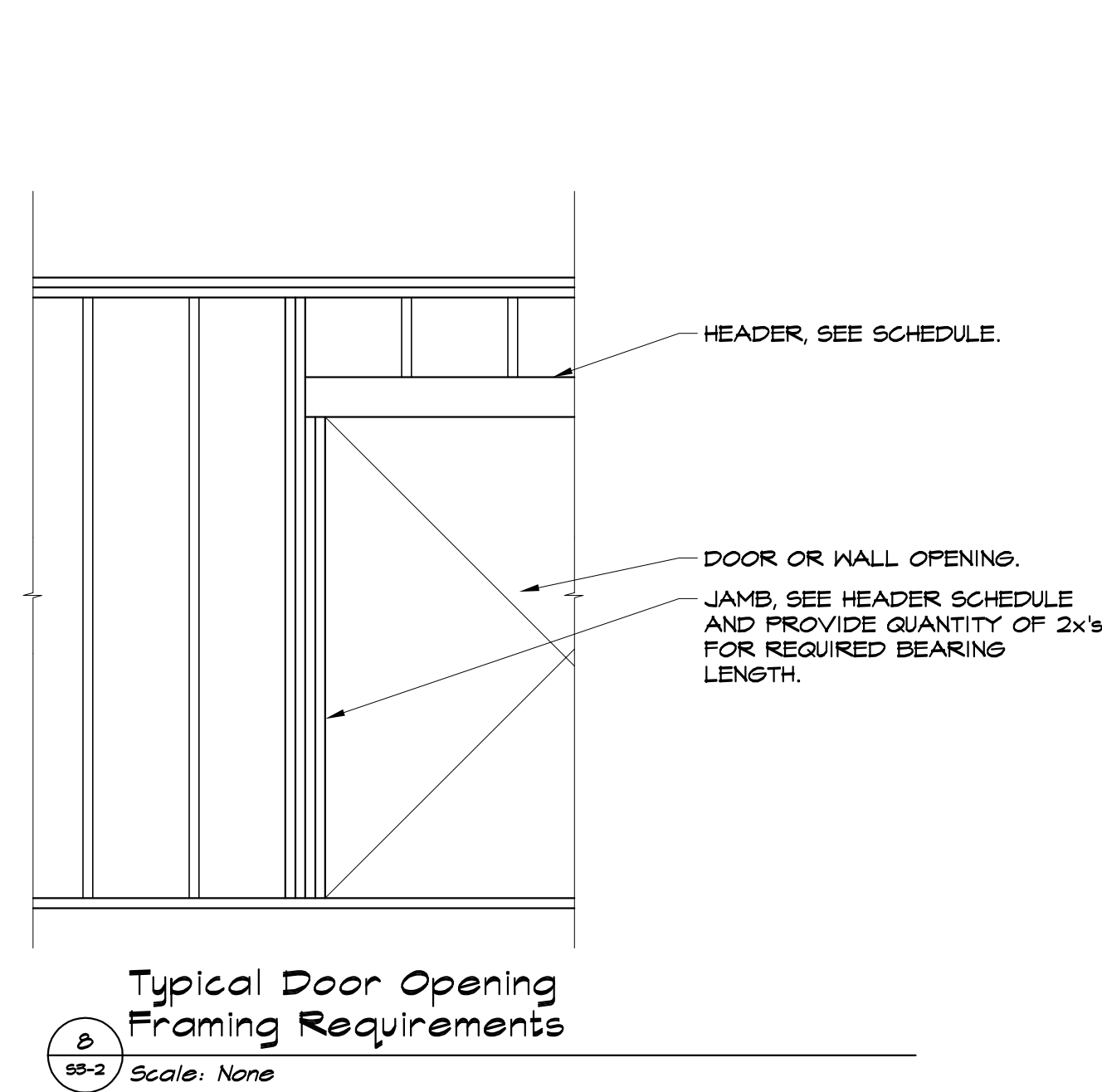


- NOTES:
- UNLESS OTHERWISE NOTED OR SPECIFIED, AT CORNERS AND INTERSECTIONS OF CONCRETE MASONRY WALLS SHALL BE CONSTRUCTED BY PLACING ONE HALF OF UNITS INTO THE OTHER MASONRY WALL WITH THE ALTERNATE UNITS HAVING A BEARING OF NOT LESS THAN FOUR INCHES ON THE UNIT BELOW.
 - UNLESS OTHERWISE NOTED OR SPECIFIED, PROVIDE DONELS FROM CONCRETE FOOTING OR WALL BELOW WITH SAME SIZE AND SPACING AS VERTICAL BARS AT LEVEL BELOW. LAP FORTY-EIGHT BAR DIAMETERS MINIMUM, UON.

6
53-2
Typical Masonry Wall Additional Reinforcement Requirement Detail
SCALE: NOT TO SCALE



DO NOT SCALE PRINTS

THESE DRAWINGS, IDEAS AND DESIGNS ARE THE PROPERTY OF ARISTA DESIGN, INC., AND MAY NOT BE REPRODUCED IN ANY MANNER WHATSOEVER, NOR ARE THEY TO BE ASSIGNED TO ANY THIRD PARTY WITHOUT FIRST OBTAINING EXPRESS WRITTEN PERMISSION FROM ARISTA DESIGN, INC.

WRITTEN DIMENSIONS ON THESE DRAWINGS SHALL TAKE PRECEDENCE OVER SCALED DIMENSIONS. CONTRACTOR SHALL VERIFY AND BE RESPONSIBLE FOR ALL DIMENSIONS AND CONDITIONS ON THE JOB, AND THE ARCHITECT MUST BE NOTIFIED IN WRITING OF ANY VARIATIONS FROM DIMENSIONS, CONDITIONS AND SPECIFICATIONS SHOWN BY THESE DRAWINGS.

Consultant:

Architecturally Engineered Structures, PLLC
Structural Engineering Consultants
www.AESStructures.com
1118 Opus Drive
Troy, Michigan 48068-6607
Telephone: 248.823.5501
Facsimile: 248.823.5502
AESStructures@AESStructures.com

Owner/Developer:

ASSEMBLIES OF GOD
31500 W. THIRTEEN MILE
SUITE 140
FARMINGTON HILLS, MI 48334

Project:

PROPOSED NEW SANCTUARY

Fa-Ho-Lo CAMP AND CONFERENCE CENTER

3000 MT. HOPE RD.
GRASS LAKE, MI 49240

Scale:

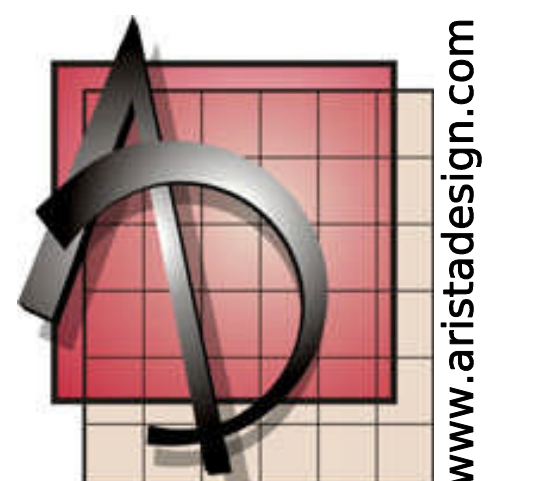
NTS

Sheet Title:

TYPICAL DETAILS

Revisions:

Arista Design, Inc.



9368 Eastwind Street
Livonia, MI 48150-4524
Tel/Fax: 734.542.3911

SEAL:

Issued For:

BIDS / PERMITS

Date:

20 JUNE 2005

Project No:

UAG-03

Drawing No:

S3-2