

| WALL WIDTH | LINTEL DEPTH | MASONRY OPENING | | | | | | |
|------------|--------------|-----------------|----------------|----------------|-----------------|------------------|------------------|------------------|
| | | UP TO 4'-0" | 4'-2" TO 6'-0" | 6'-2" TO 8'-0" | 8'-2" TO 10'-0" | 10'-2" TO 12'-0" | 12'-2" TO 14'-0" | 14'-2" TO 16'-0" |
| 8" | 8" | 2-#4 | 2-#5 | 2-#5 | 2-#5 | 2-#6 | 2-#6 | |
| | 16" | — | 2-#4 | 2-#5 | 2-#6 | 2-#6 | | |
| 12" | 8" | 2-#4 | 2-#5 | 2-#5 | — | — | — | |
| | 16" | — | 2-#4 | 2-#5 | 2-#6 | 2-#7 | | |

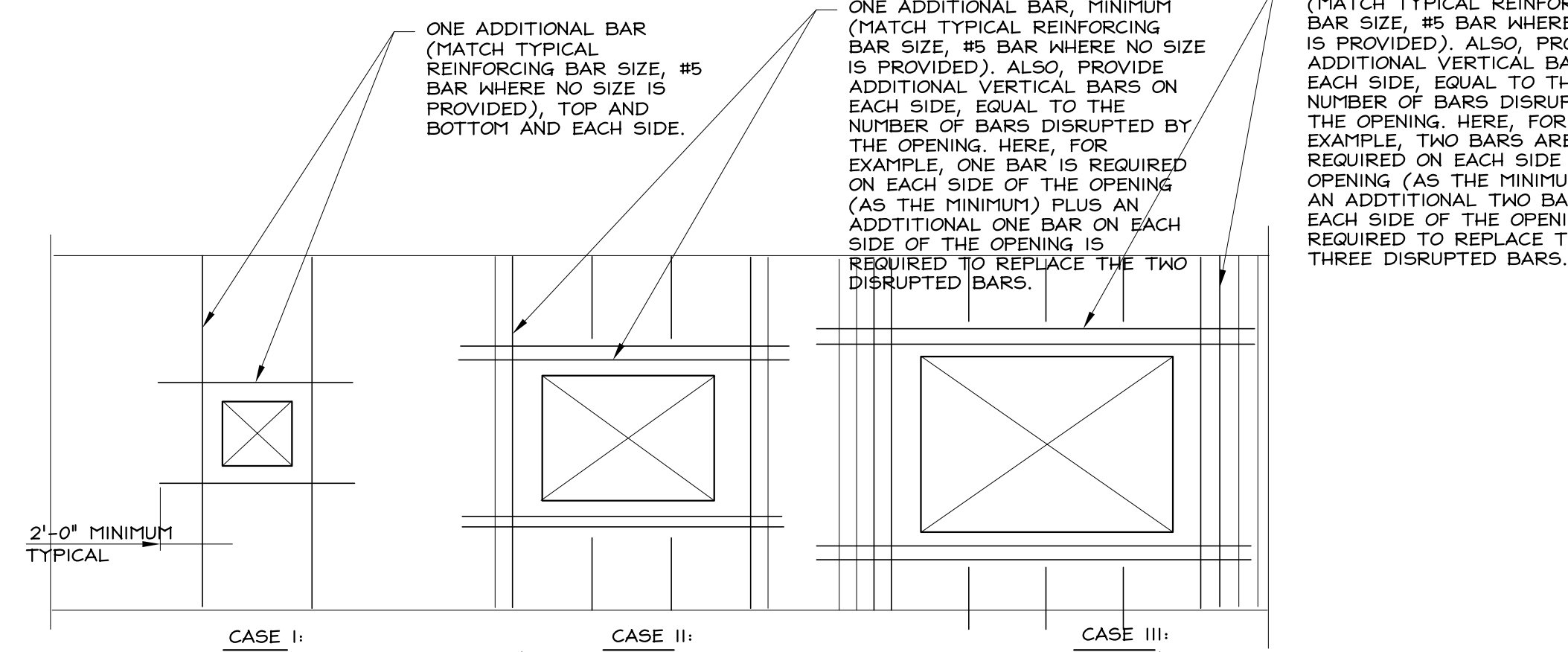
- NOTES:
1. PLACE REINFORCEMENT AT BOTTOM OF BOND BEAM, U.O.N.
 2. LINTELS DESIGNED FOR WALL LOADS OF TRIANGULAR AREA ABOVE LINTELS. HEIGHT OF TRIANGLE ABOVE LINTEL EQUALS 1/2 * MASONRY OPENING + 8"
 3. SEE ARCHITECTURAL DRAWINGS FOR ALL MASONRY OPENINGS AND LINTEL CONFIGURATIONS.

6 Typical Masonry Wall Lintel Schedule - Concrete Masonry Lintels
 Scale: Not to Scale
 Detail: AES-4000-112

| MASONRY OPENING | STEEL LINTEL TYPE | | | |
|------------------|-------------------|-------------|---|--|
| | 4 INCH WALL | 6 INCH WALL | 8 INCH WALL | 12 INCH WALL |
| UP TO 4'-0" | L3 1/2x3 1/2x1/4 | WT 4x9 | (2)L3 1/2x3 1/2x1/4 | (3)L3 1/2x3 1/2x1/4 OR (2)L5x3 1/2x1/4 (LLH) |
| 4'-2" TO 6'-0" | L3 1/2x3 1/2x1/4 | WT 4x9 | (2)L4x3 1/2x1/4 | (3)L4x3 1/2x1/4 OR (2)L5x5x5/16 |
| 6'-2" TO 8'-0" | L5x3 1/2x5/16 | WT 7x11 | (2)L5x3 1/2x5/16 | (3)L5x3 1/2x5/16 OR (2)L5x5x5/16 |
| 8'-2" TO 10'-0" | L6x3 1/2x3/8 | WT 8x13 | (2)L6x3 1/2x3/8 | (3)L6x3 1/2x3/8 OR T58x4x5/16 + 1/4" PLATE * |
| 10'-2" TO 12'-0" | — | — | T58x4x1/4+1/4" PLATE W/ 1/2" DIA. HEADED STUDS @ 16" O.C. * | T58x4x3/8 + 1/4" PLATE * |

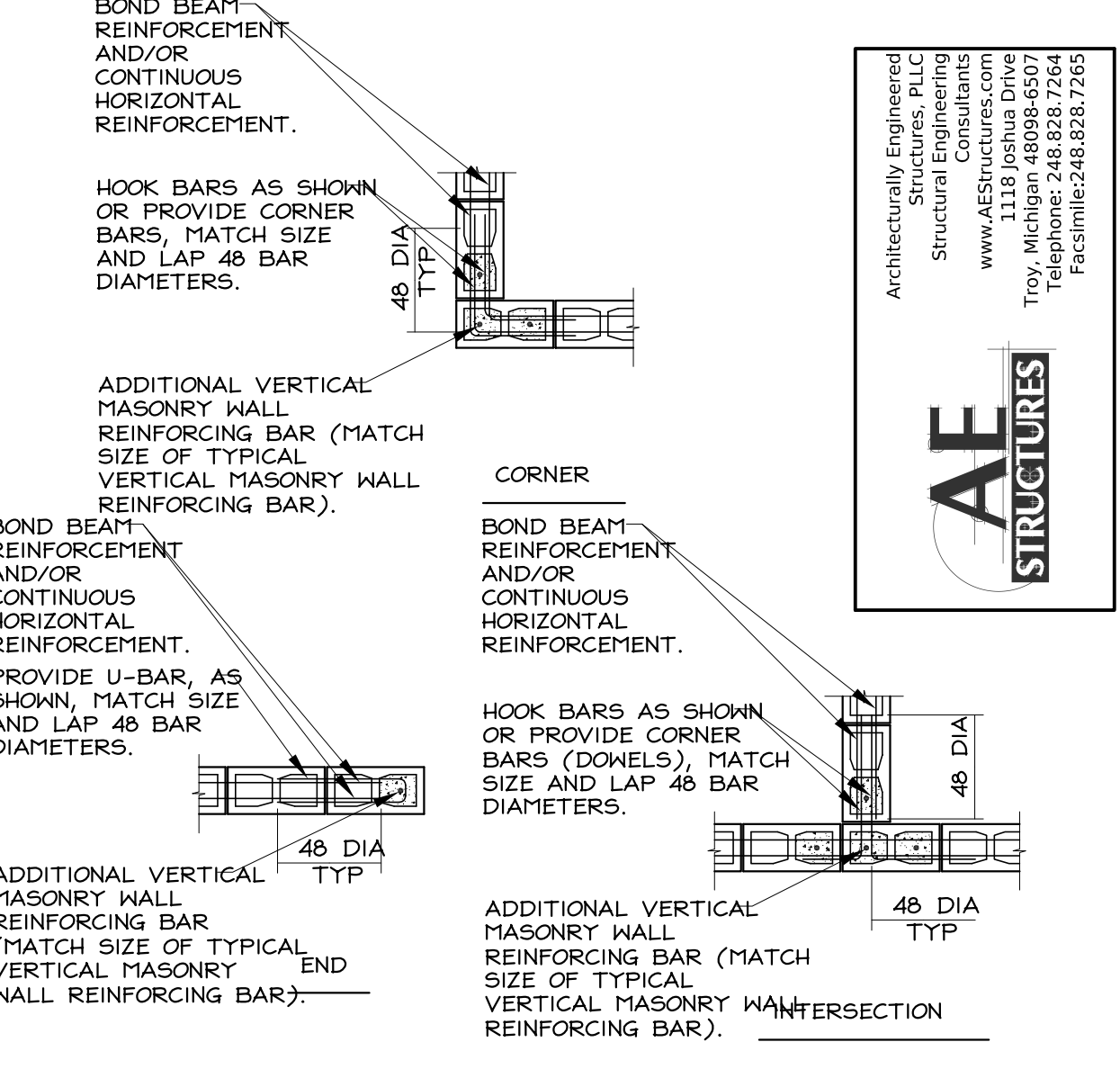
- * WELD PLATE TO TUBE 3/16"x3" @ 12" O.C. EACH SIDE.
- NOTES:
1. ALL ANGLES ARE TO BE LONG LEG VERTICAL U.O.N.
 2. PROVIDE MINIMUM 4 INCHES OF SOLID BEARING EACH END OF LINTEL.
 3. SEE ARCH. FOR ALL MASONRY OPENINGS AND LINTEL CONFIGURATION.
 4. TACK WELD ANGLES TOGETHER, EACH SIDE, 12" ON CENTER (MAXIMUM).
 5. ALL MASONRY LINTELS NOTED HERE ARE NOT INTENDED TO SUPERCEDE TO SUPERCEDE THOSE INDICATED DIRECTLY ON DRAWINGS.

5 Typical Masonry Wall Steel Lintel Schedule
 Scale: Not to Scale
 Detail: AES-4000-111



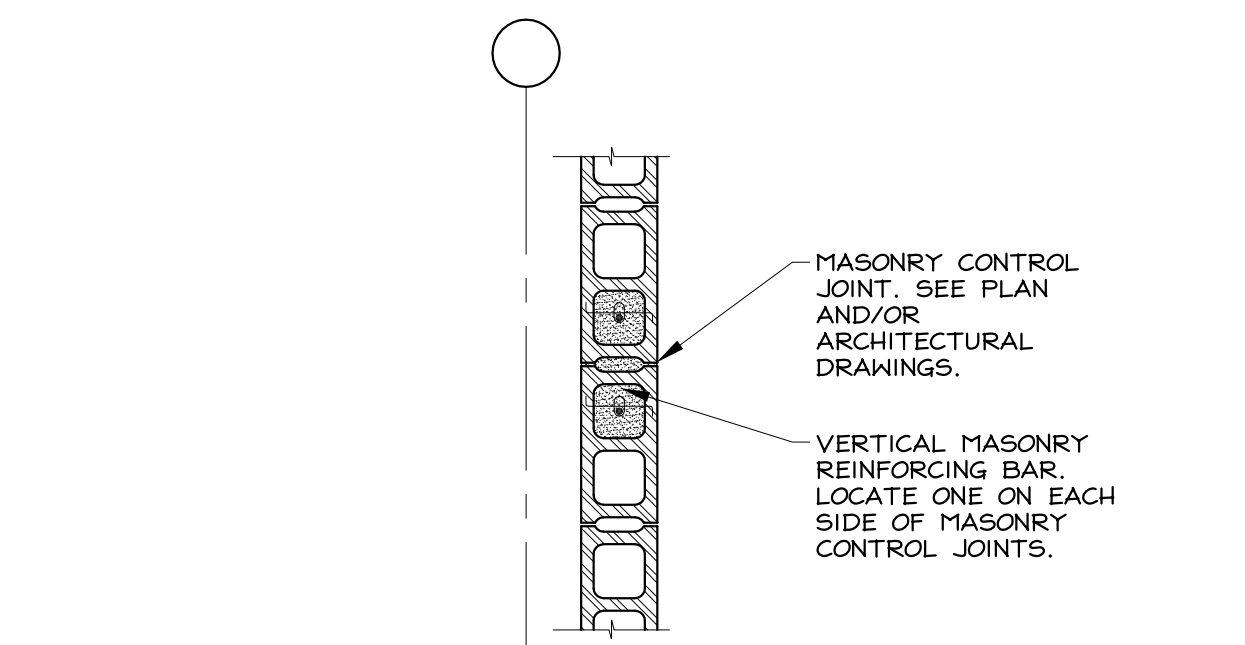
- NOTE: VERTICAL REINFORCEMENT OF 2 BARS, EACH BAR SHALL BE PLACED IN A SEPARATE CELL. HORIZONTAL REINFORCEMENT OF 2 BARS, EACH BAR SHALL BE PLACED IN A SEPARATE LAYER.
- CASE I: APPLIES TO (1) ALL OPENINGS IN NON-STRUCTURAL PARTITIONS AND (2) ANY OPENING 2'-0" OR LESS BOTH WAYS IN STRUCTURAL PARTITIONS OR EXTERIOR WALLS.
- CASE II: APPLIES TO ALL STRUCTURAL PARTITIONS AND EXTERIOR WALLS WHEN OPENING EXCEEDS 2'-0" BUT NOT MORE THAN 4'-0" IN EITHER DIRECTION.
- CASE III: APPLIES TO ALL STRUCTURAL PARTITIONS AND EXTERIOR WALLS WHEN OPENINGS GREATER THAN 4'-0" IN EITHER DIRECTION BUT LESS THAN 8'-0" IN EITHER DIRECTION.

4 Typical Masonry Wall Additional Reinforcement Requirements Around Masonry Openings Detail
 Scale: Not to Scale
 Detail: AES-4000-113



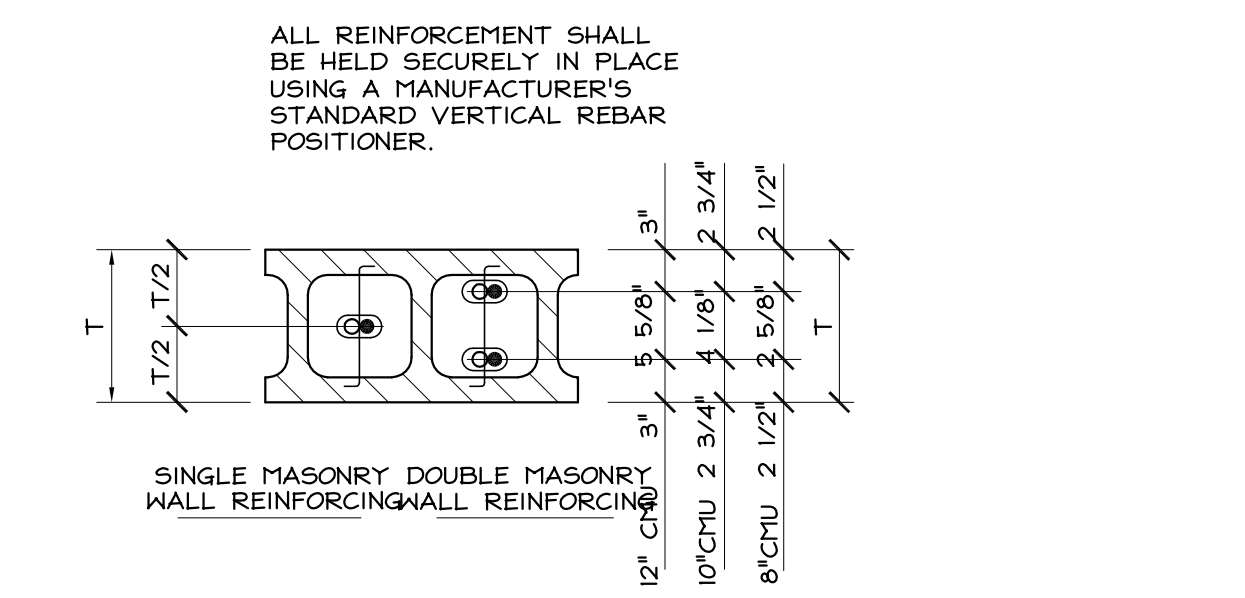
- NOTES:
1. UNLESS OTHERWISE NOTED OR SPECIFIED, AT CORNERS AND INTERSECTIONS OF CONCRETE MASONRY WALLS SHALL BE CONSTRUCTED BY PLACING ONE HALF OF UNITS INTO THE OTHER MASONRY WALL WITH THE ALTERNATE UNITS HAVING A BEARING OF NOT LESS THAN FOUR INCHES ON THE UNIT BELOW.
 2. UNLESS OTHERWISE NOTED OR SPECIFIED, PROVIDE DOWELS FROM CONCRETE FOOTING OR WALL BELOW WITH SAME SIZE AND SPACING AS VERTICAL BARS AT LEVEL BELOW. LAP FORTY-EIGHT BAR DIAMETERS MINIMUM, U.O.N.

3 Typical Masonry Wall Additional Reinforcement Requirement Detail
 Scale: Not to Scale
 Detail: AES-4000-102



- ARCHITECTURAL DRAWINGS TYPICALLY INDICATE MASONRY CONTROL JOINTS AND BRICK EXPANSION JOINTS. THE LOCATION OF ONE SHALL DEFINE THE OTHER. WHERE THERE IS NO INDICATION OF EITHER, THE CONTRACTOR SHALL, FOR BIDDING PURPOSES, PROVIDE MASONRY CONTROL JOINTS, AND BRICK EXPANSION JOINTS (WHERE REQUIRED), AT A SPACING NOT TO EXCEED 15'-0" ON CENTER. A MASONRY CONTROL JOINT AND/OR BRICK EXPANSION JOINT SHALL BE LOCATED WITHIN 2'-0" OF ALL CORNERS.

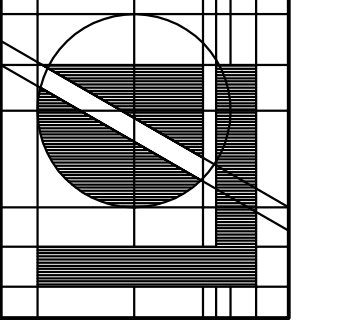
2 Typical Masonry Wall Control Joint Detail
 Scale: Not to Scale
 Detail: AES-4000-102



1 Typical Masonry Wall Reinforcement Detail
 Scale: Not to Scale
 Detail: AES-4000-101

Architecturally Engineered
 Structures, PLLC
 Structural Engineering
 www.AESstructures.com
 1118 Joshua Drive
 Brighton, Michigan 48116
 Telephone: 248.828.7264
 Facsimile: 248.828.7265

AF STRUCTURES



Lindhout Associates
 architects aia pc
 10465 citation drive,
 brighton, michigan 48116-9510
 www.lindhout.com (610)227-5668 fax:(610)227-5855

Rand Construction
 Designers*Engineers*Builders
 1270 Rickett Road, Brighton, MI 48116
 T 810.227.7011 F 810.227.7088
 www.randconstruction.com

dr: rv
 ck: rv
 opp: d: rv
 31 OCT 2005
 date
 issued for
 BIDS/PERMIT

NEW MEDICAL FACILITY for:
GENOA MEDICAL CENTER
 GENOA TOWNSHIP, MICHIGAN
SCHEDULES AND DETAILS

S4-3
 0535