



NUDELL ARCHITECTS

31690 W. Twelve Mile Road
Farmington Hills, Michigan 48334
t 248 324 8800 f 248 324 5550

OFFICES IN

Dallas Texas
972 387 5900
Orlando Florida
407 740 8022
Costa Mesa, California
714 979 8100

NOTICE

THIS ARCHITECTURAL AND/OR ENGINEERING DRAWING IS GIVEN IN CONFIDENCE. NO USE IN WHOLE OR PART MAY BE MADE WITHOUT PRIOR WRITTEN CONSENT OF NUDELL ARCHITECTS. ALL RIGHTS ARE HEREBY SPECIALLY RESERVED.
NUDELL ARCHITECTS
COPYRIGHT YEAR 2005

Rand

RAND CONSTRUCTION ENGINEERING, INC.
Designers - Engineers - Builders
1270 RICKETT ROAD, BRIGHTON, MI 48116
T: 810.227.7011 - F: 810.227.7088

project title PRODUCTION SERVICES MANAGEMENT INC. SALINE, MI

sheet title TYPICAL DETAILS

DO NOT SCALE DRAWINGS
USE FIGURED DIMENSIONS ONLY

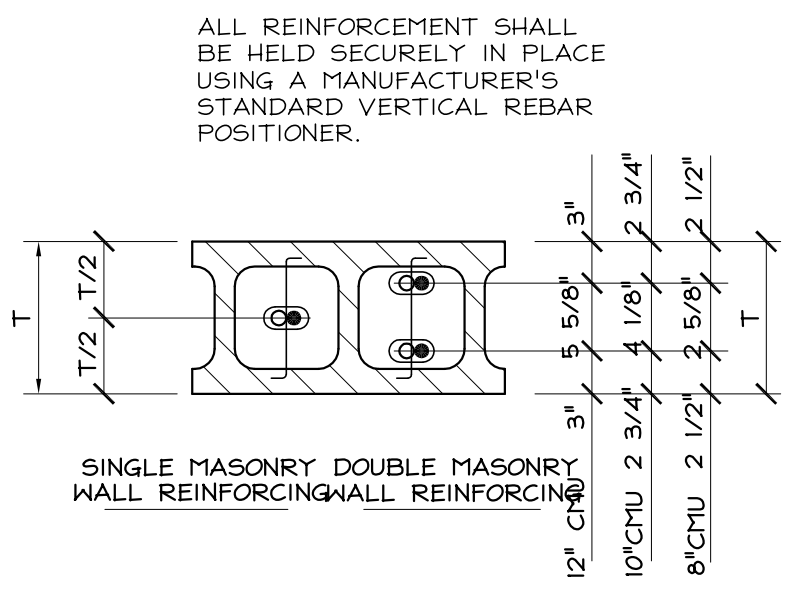
project number
2005-372

drawn MV
checked MV
approved MV

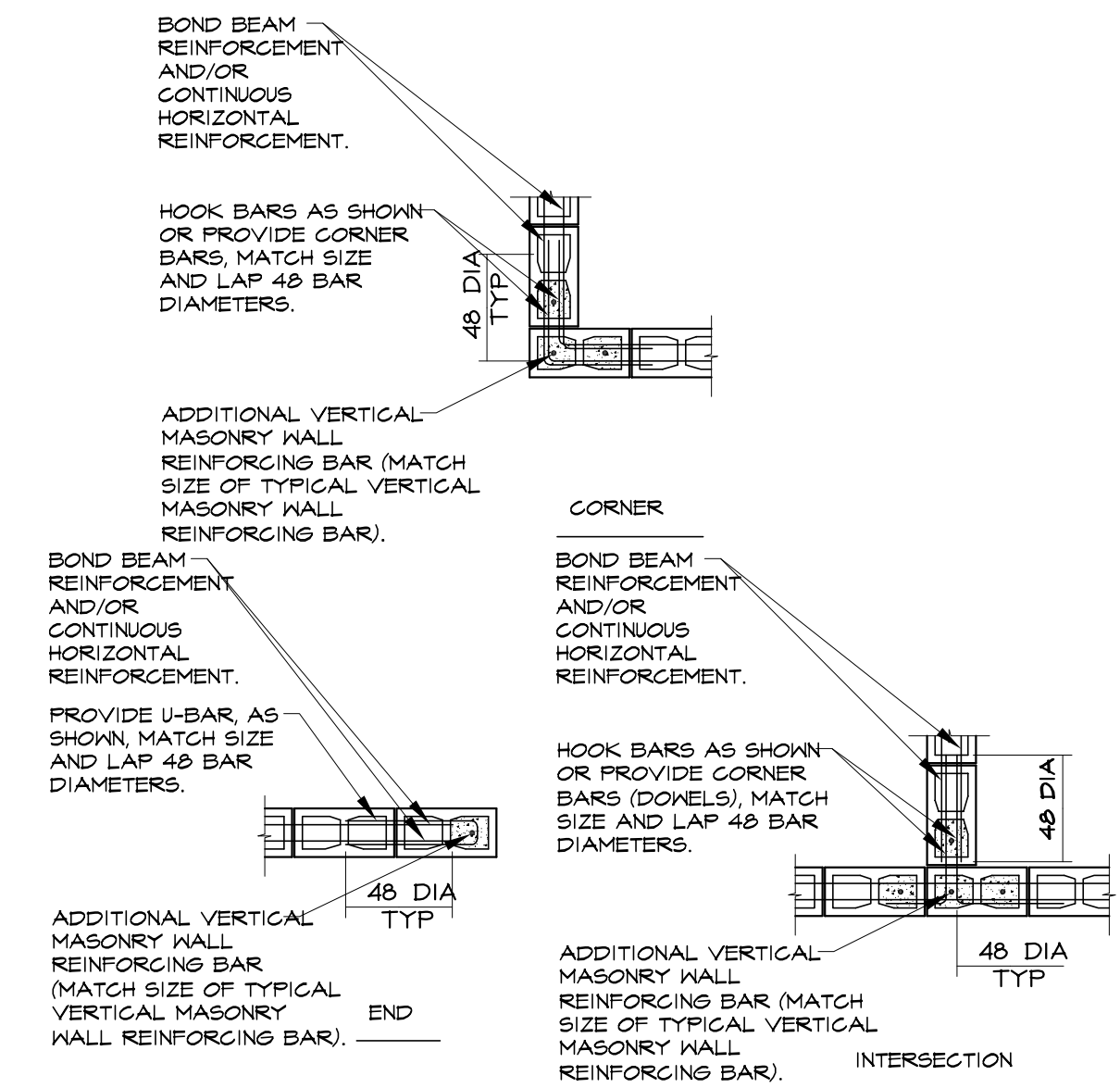
issued for date
REVIEW 05/03/06
PERMIT 05/26/06

sheet

S-400

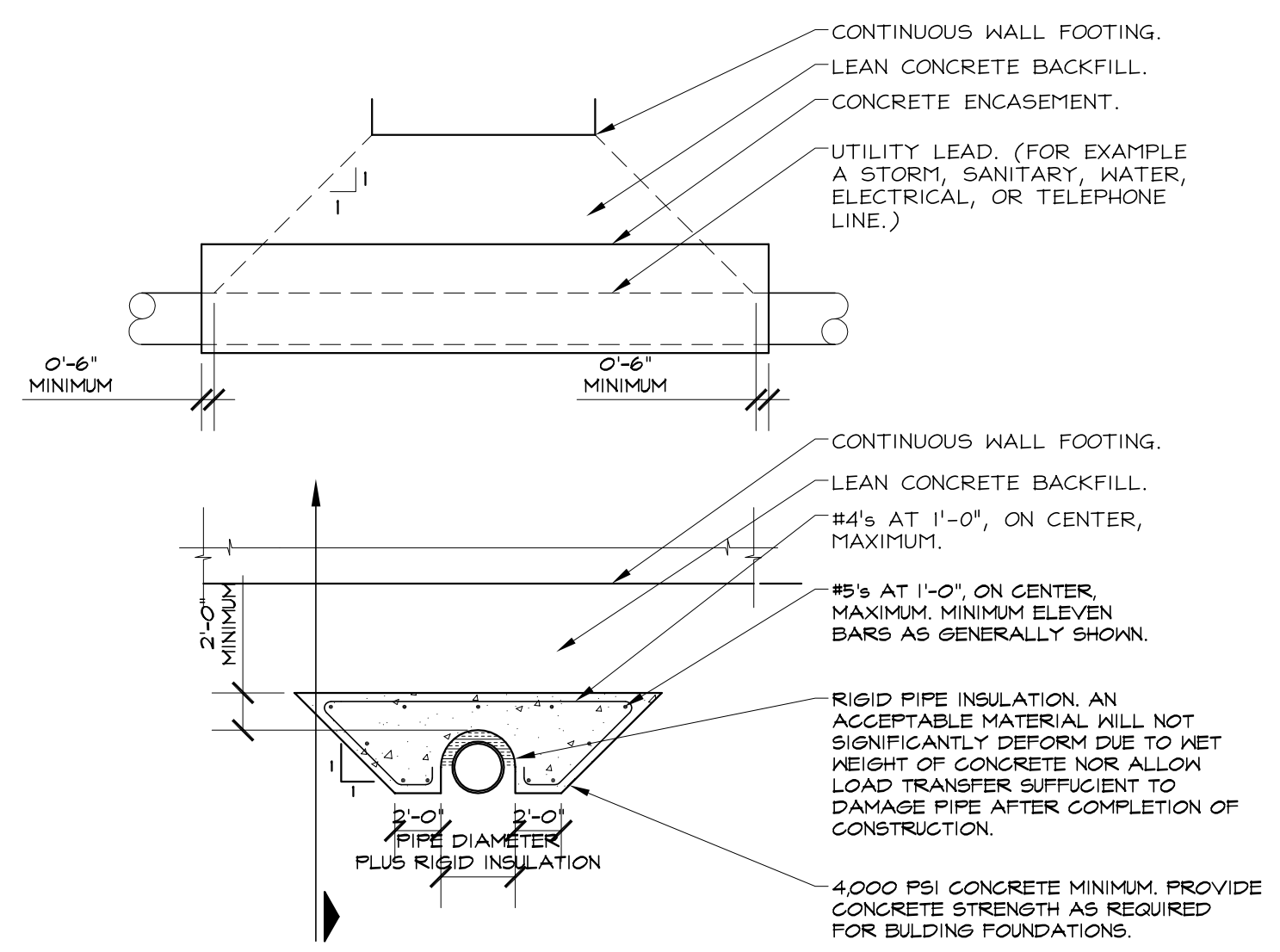


12 Typical Masonry Wall Reinforcement Detail
Scale: Not to Scale
Detail: AES-4000-101

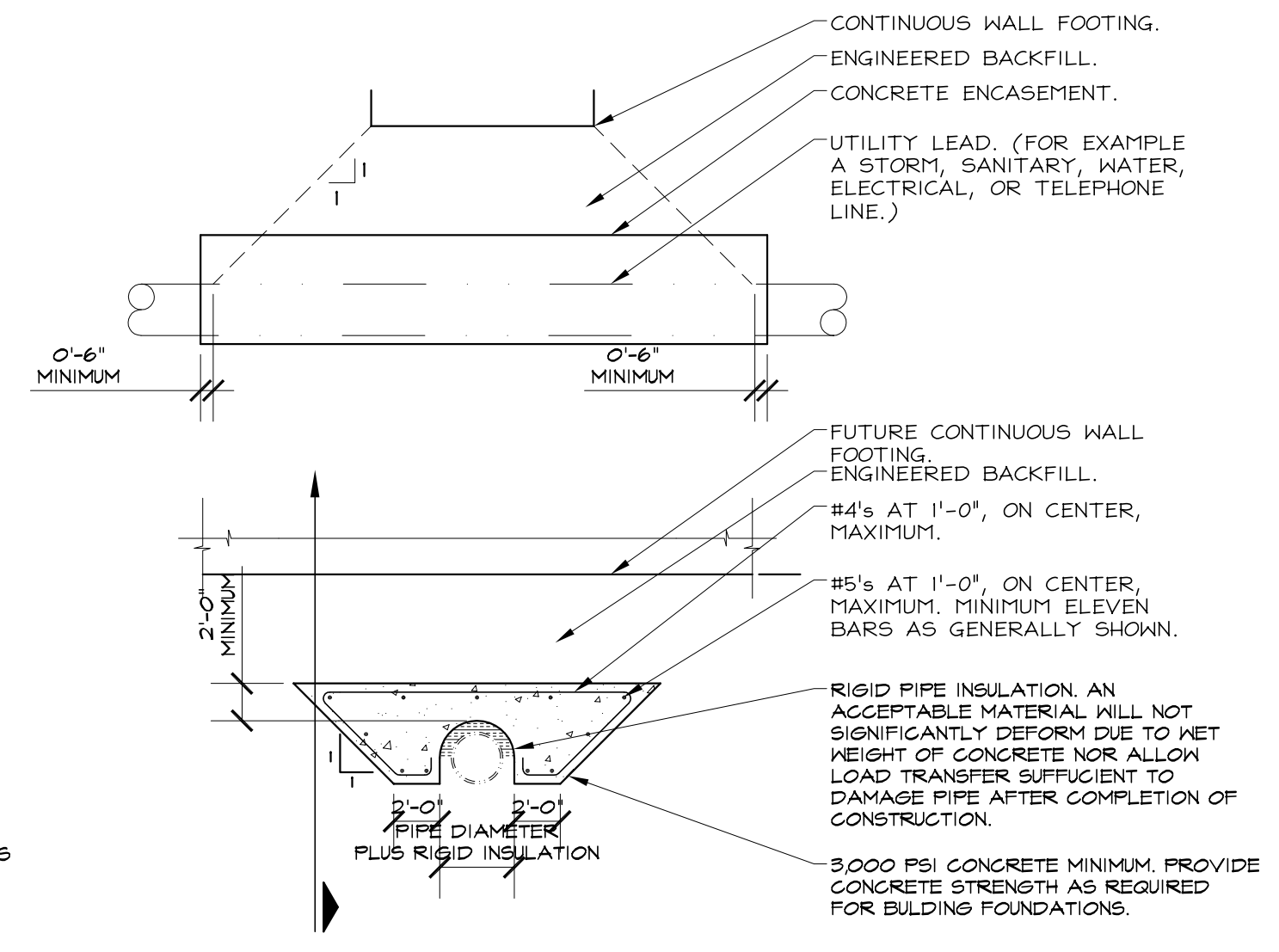


NOTES:
1. UNLESS OTHERWISE NOTED OR SPECIFIED AT CORNERS AND INTERSECTIONS OF CONCRETE MASONRY WALLS SHALL BE CONSTRUCTED BY PLACING ONE HALF OF UNITS INTO THE OTHER MASONRY WALL WITH THE ALTERNATE UNITS HAVING A BEARING OF NOT LESS THAN FOUR INCHES ON THE UNIT BELOW.
2. UNLESS OTHERWISE NOTED OR SPECIFIED, PROVIDE DOVELS FROM CONCRETE FOOTING OR WALL BELOW WITH SAME SIZE AND SPACING AS VERTICAL BARS AT LEVEL BELOW. LAP FORTY-EIGHT BAR DIAMETERS MINIMUM, 10X.

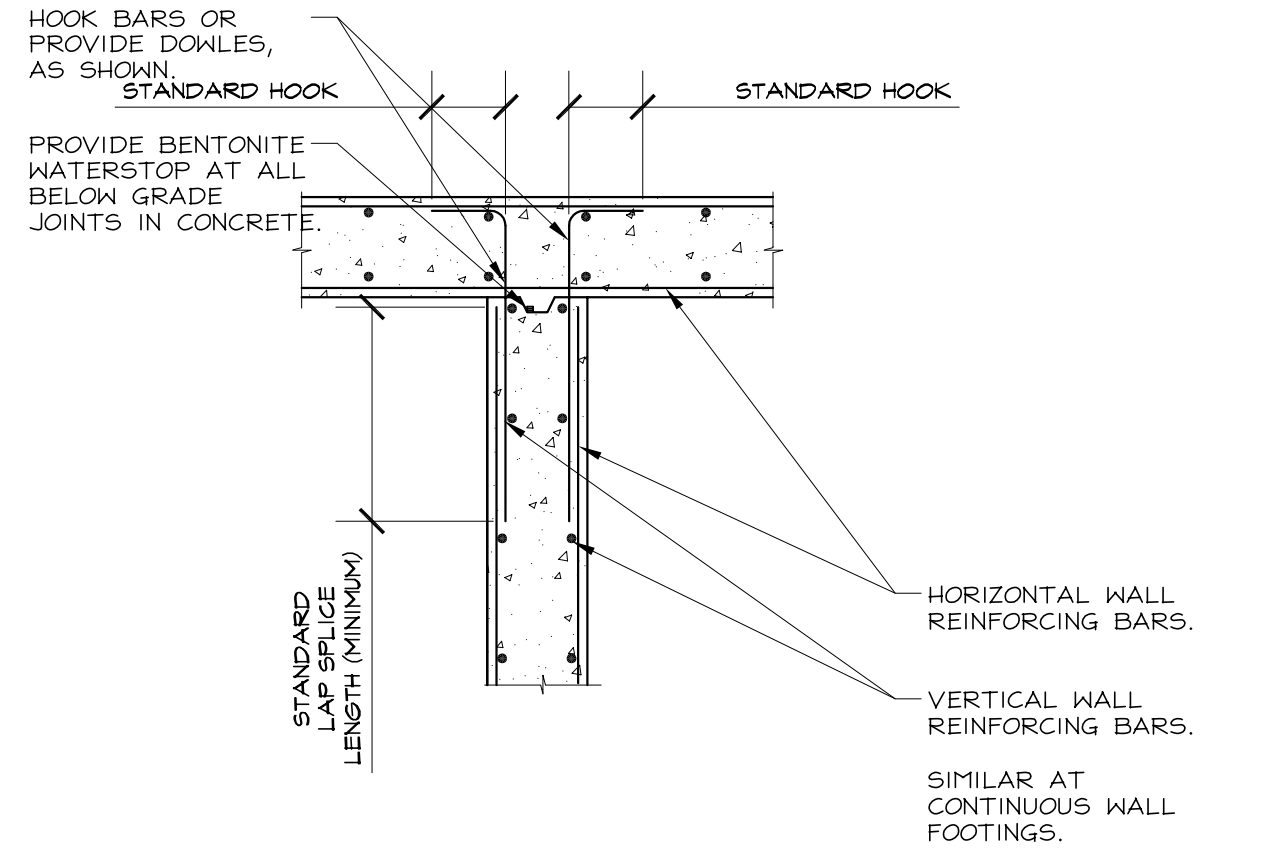
11 Typical Masonry Wall Additional Reinforcement Requirement Detail
Scale: Not to Scale
Detail: AES-4000-102



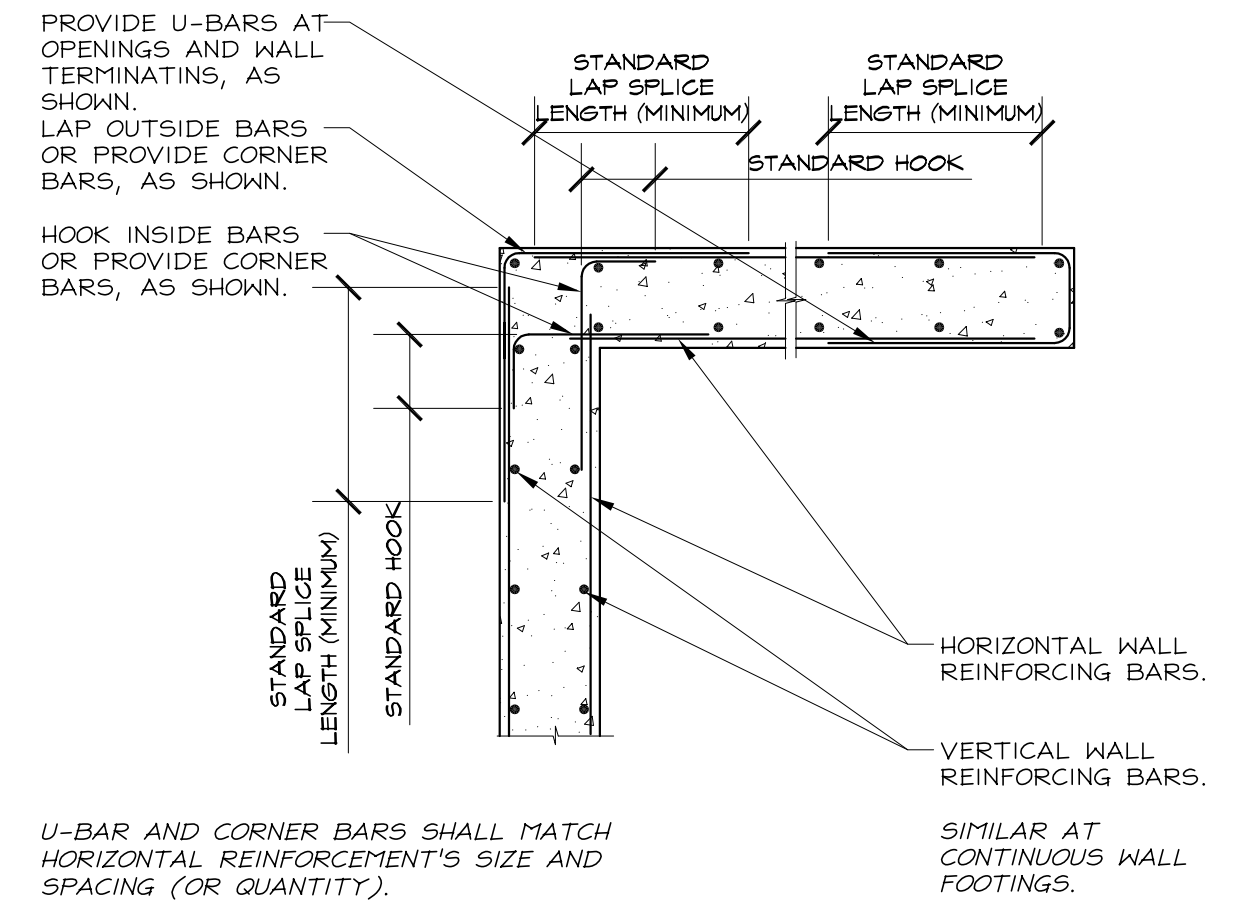
9 Typical Building Utility Lead Protection Requirement Detail
Scale: Not to Scale
Detail: AES-3300-032



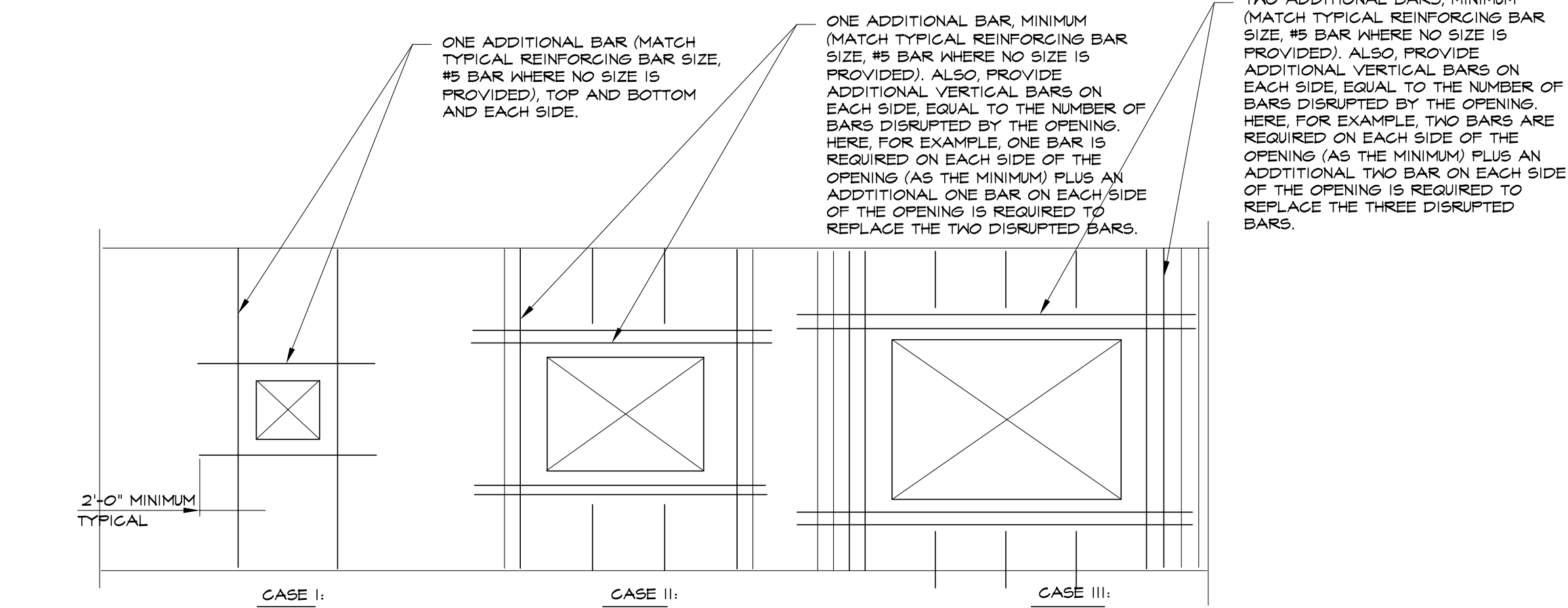
8 Typical Building Utility Lead Protection Requirement Detail
Scale: Not to Scale
Detail: AES-3300-031



6 Typical Additional Reinforcement Requirements For Concrete Wall and Continuous Wall Footing Intersections
Scale: Not to Scale
Detail: AES-3300-124



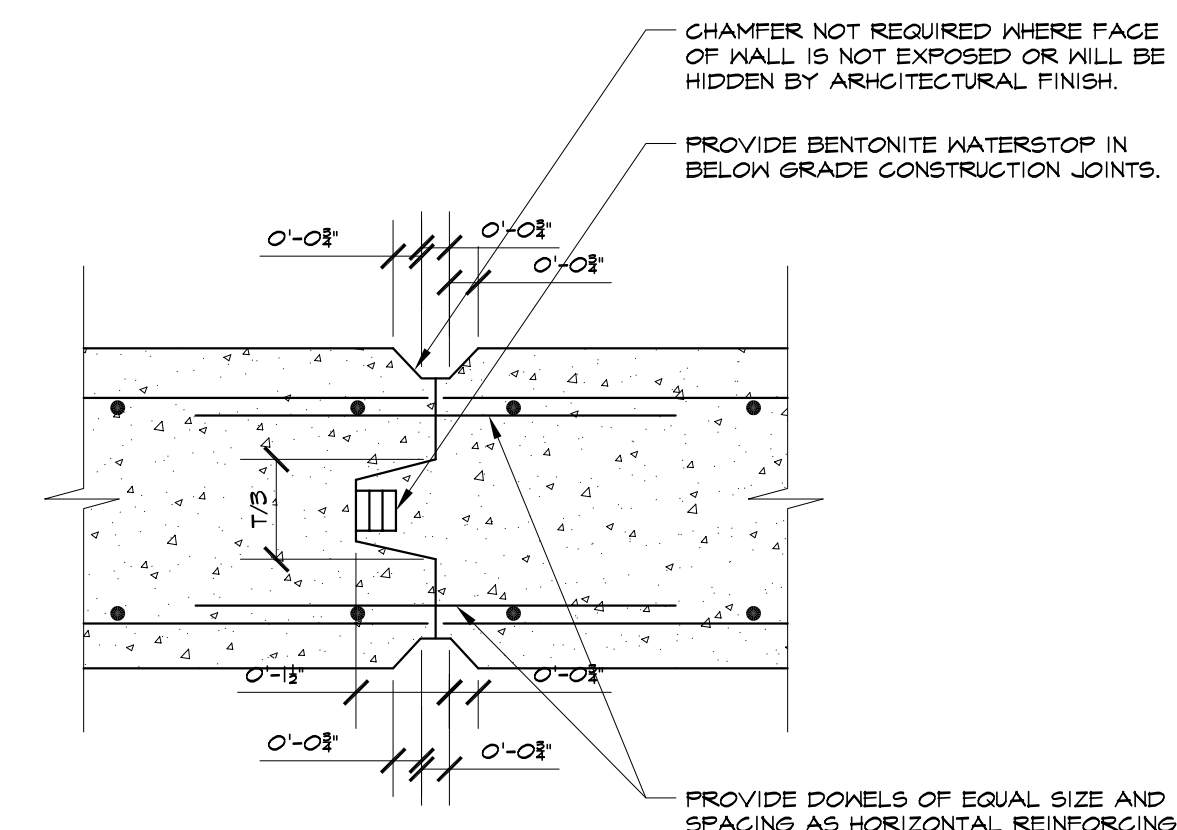
5 Typical Additional Reinforcement Requirements For Concrete Wall and Continuous Wall Footing Corners, Terminations, and Openings
Scale: Not to Scale
Detail: AES-3300-123



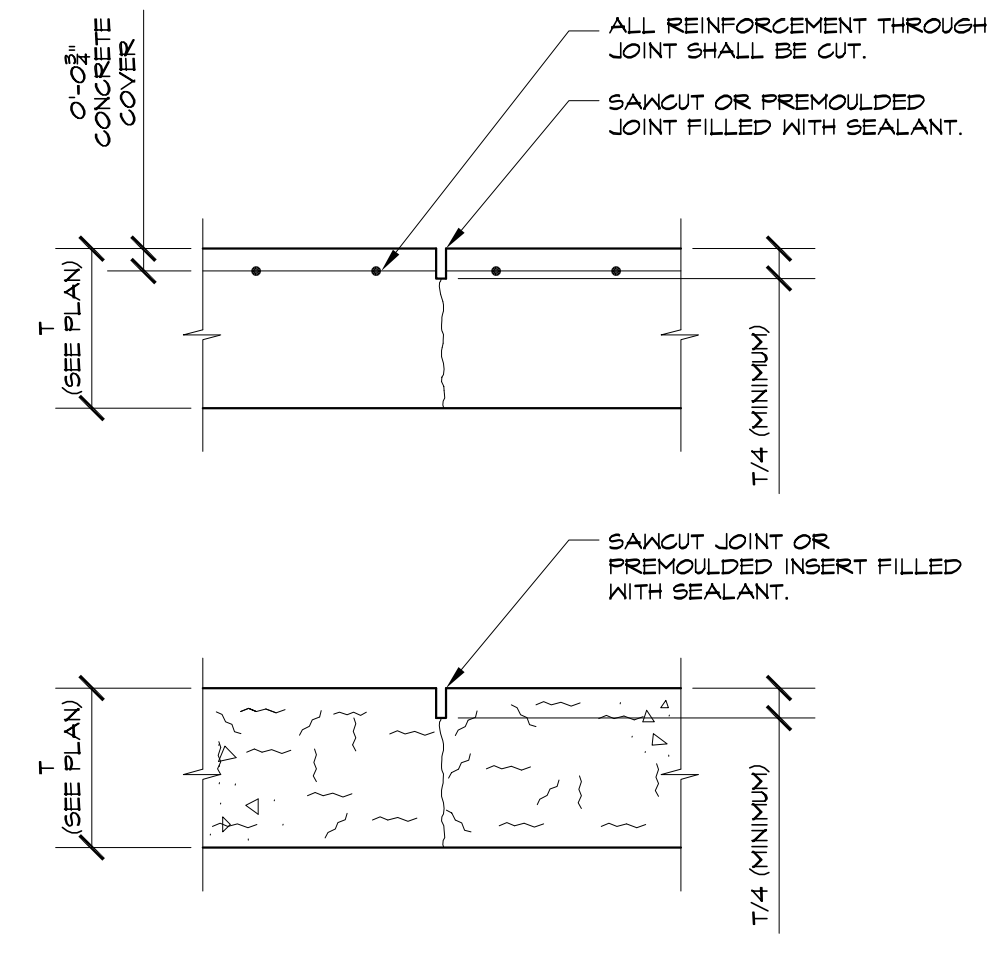
CASE I: APPLIES TO (1) ALL OPENINGS IN NON-STRUCTURAL PARTITIONS AND (2) ANY OPENING 2'-0" OR LESS BOTH WAYS IN STRUCTURAL PARTITIONS OR EXTERIOR WALLS.
CASE II: APPLIES TO ALL STRUCTURAL PARTITIONS AND EXTERIOR WALLS WHEN OPENING EXCEEDS 2'-0" BUT NOT MORE THAN 4'-0" IN EITHER DIRECTION.
CASE III: APPLIES TO ALL STRUCTURAL PARTITIONS AND EXTERIOR WALLS WHEN OPENINGS GREATER THAN 4'-0" IN EITHER DIRECTION BUT LESS THAN 8'-0" IN EITHER DIRECTION.

NOTE: VERTICAL REINFORCEMENT OF 2 BARS, EACH BAR SHALL BE PLACED IN A SEPARATE CELL. HORIZONTAL REINFORCEMENT OF 2 BARS, EACH BAR SHALL BE PLACED IN A SEPARATE LAYER.

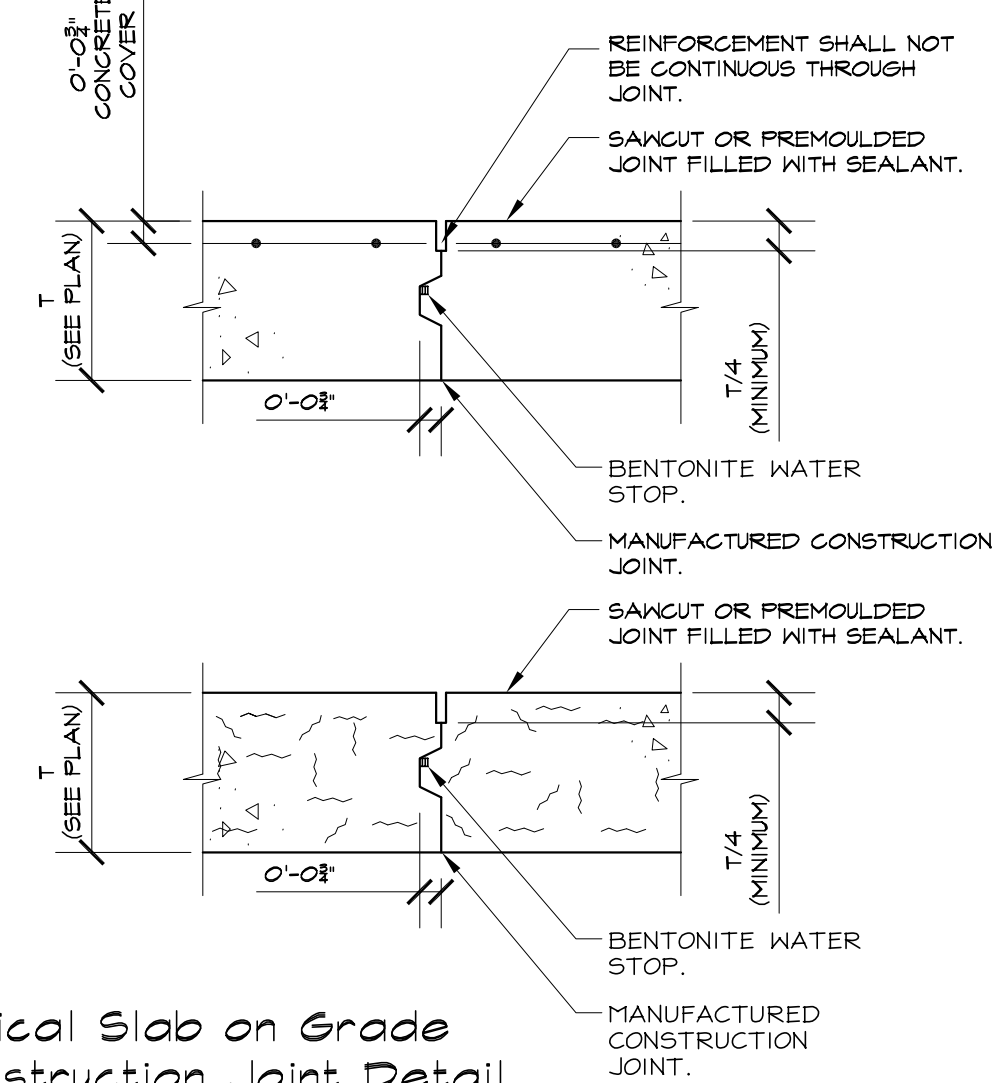
7 Typical Masonry Wall Additional Reinforcement Requirements Around Masonry Openings Detail
Scale: Not to Scale
Detail: AES-4000-113



4 Typical Concrete Wall Construction Joint Detail
SCALE: NOT TO SCALE

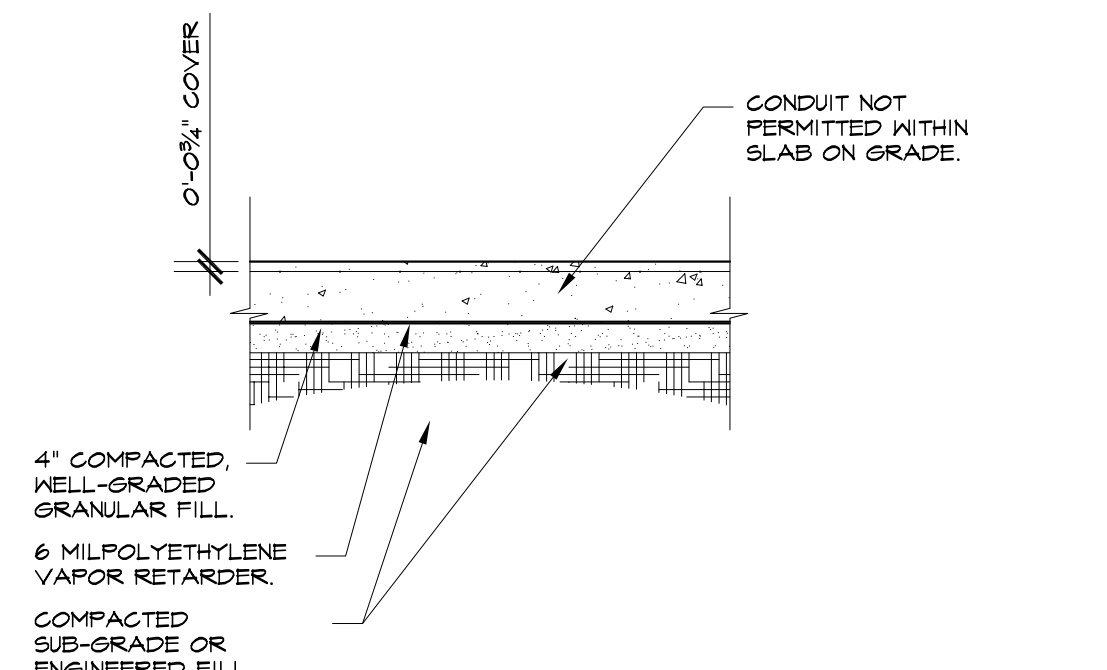


3 Typical Slab on Grade Construction Joint Detail
Scale: Not to Scale
Detail: AES-3300-103



2 Typical Slab on Grade Construction Joint Detail
Scale: Not to Scale
Detail: AES-3300-102

TO ACHIEVE THE SPECIFIED FLOOR COVERINGS, AND ASSOCIATED WARRANTIES, THE VAPOR BARRIER MUST BE PLACED DIRECTLY BENEATH THE CONCRETE SLAB ON GRADE. PLACING THE VAPOR BARRIER AT THIS LOCATION INCREASES THE POTENTIAL FOR "CURLING." NOTE: THE POTENTIAL FOR CURLING DOES NOT MEAN CURLING WILL OCCUR. THE CONTRACTOR SHALL RECOGNIZE THIS AND PLAN AND PLACE AND CURE THE CONCRETE SLAB ON GRADE IN SUCH A WAY AS TO ELIMINATE CURLING. CURLED SLABS ARE SUBJECT TO REMOVAL AND REPLACEMENT.



1 Typical Slab on Grade Detail
Scale: Not to Scale
Detail: AES-3300-101